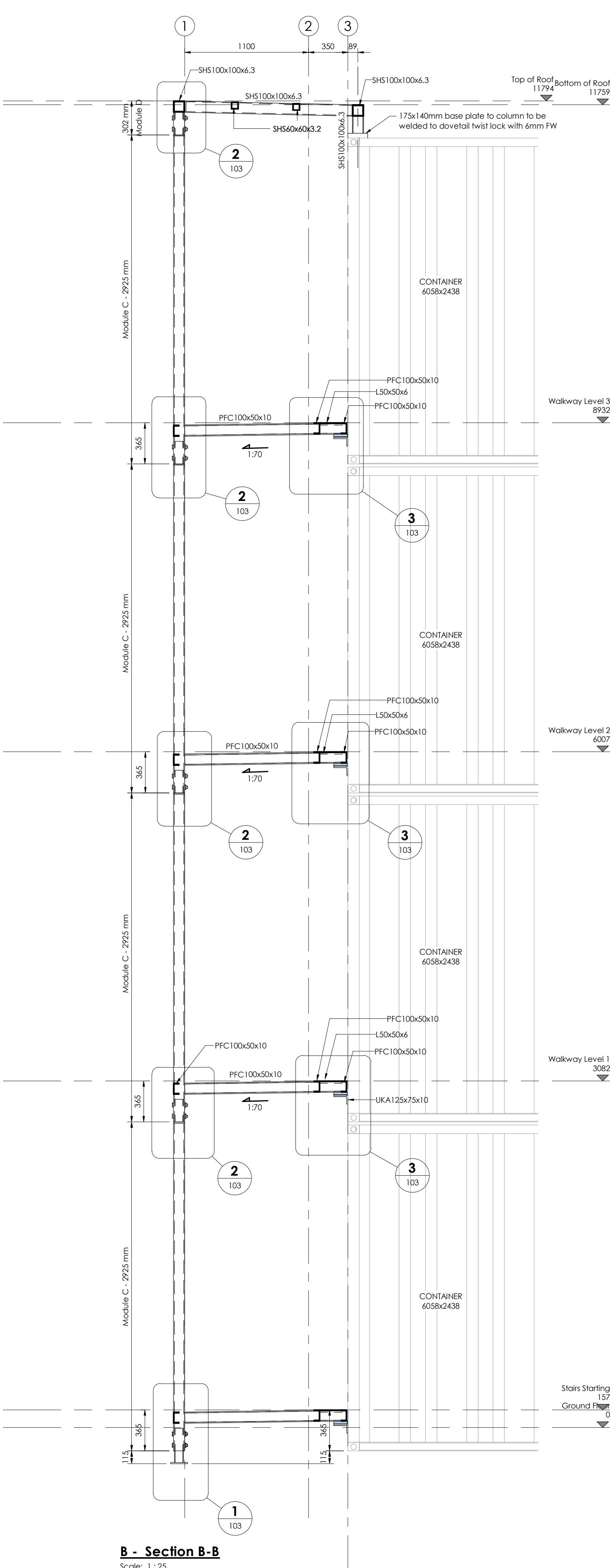
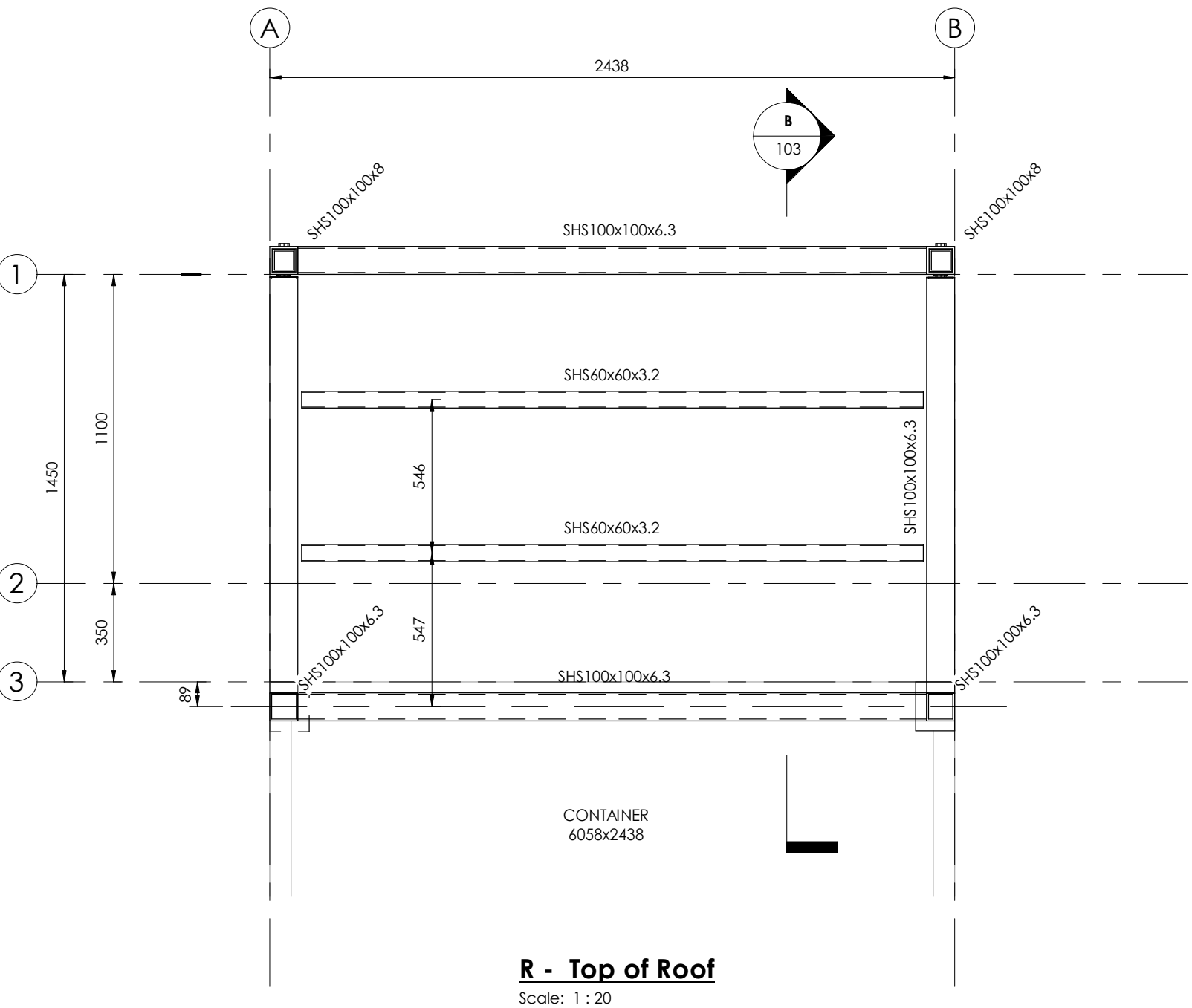
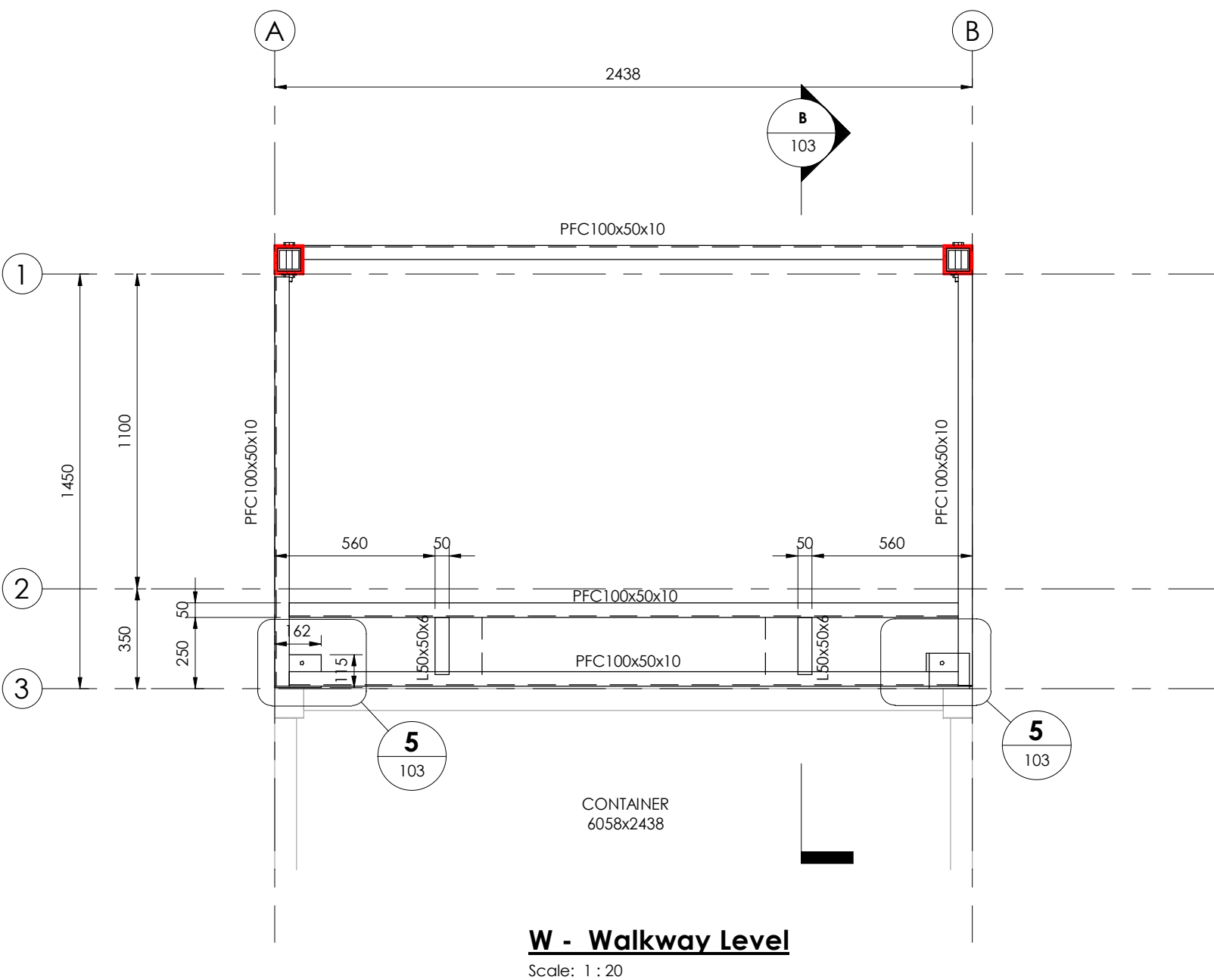
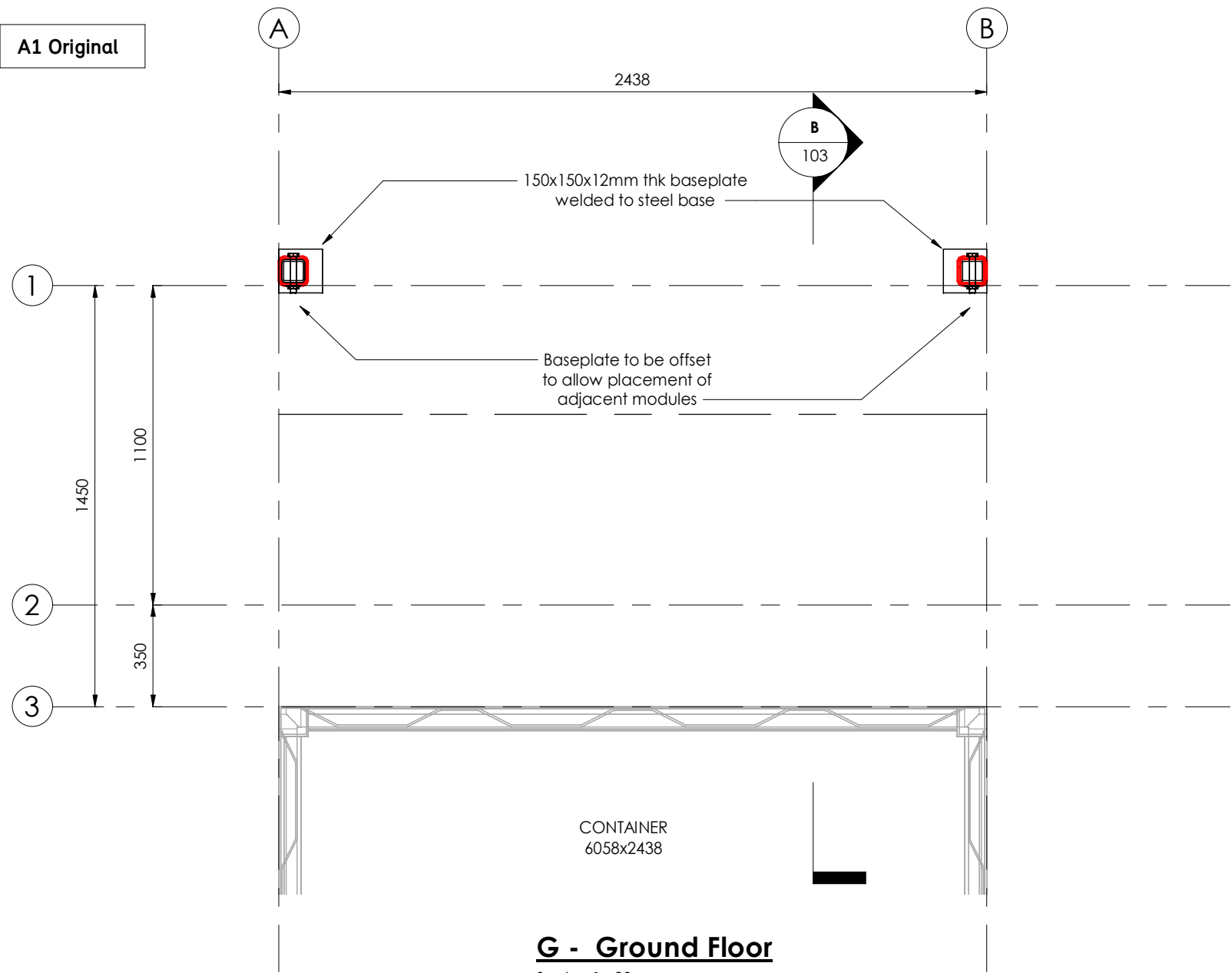
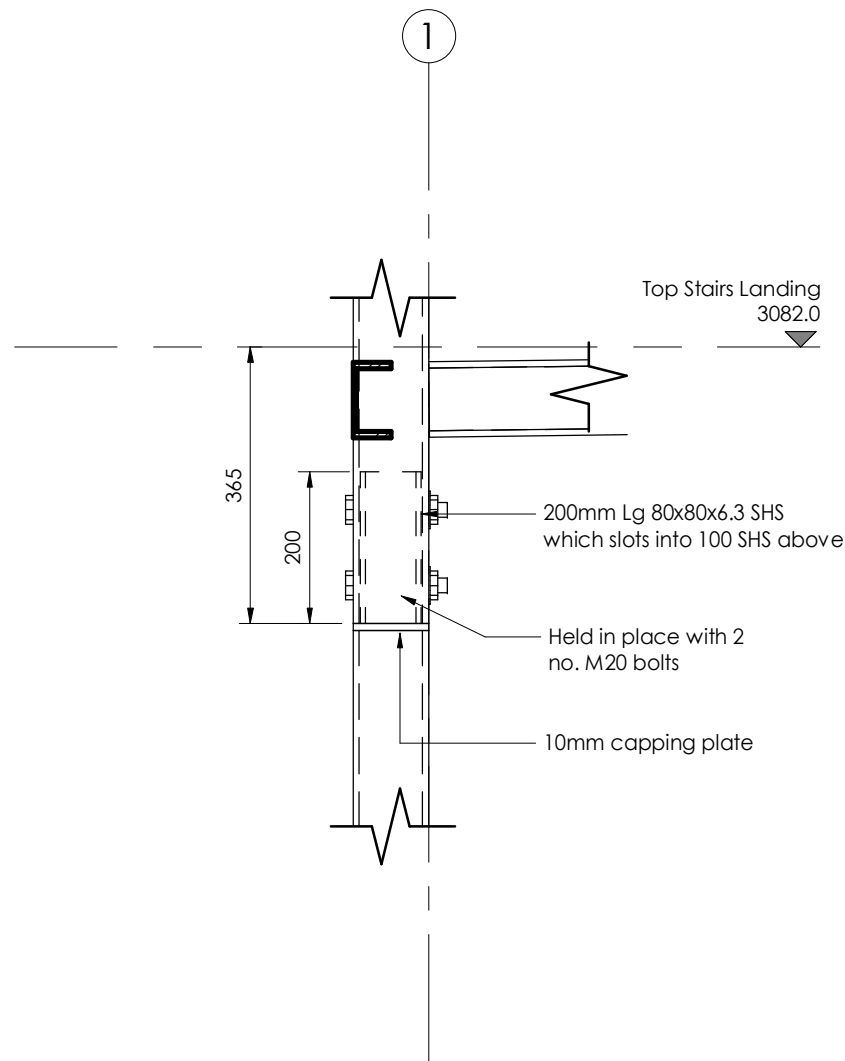


A1 Original



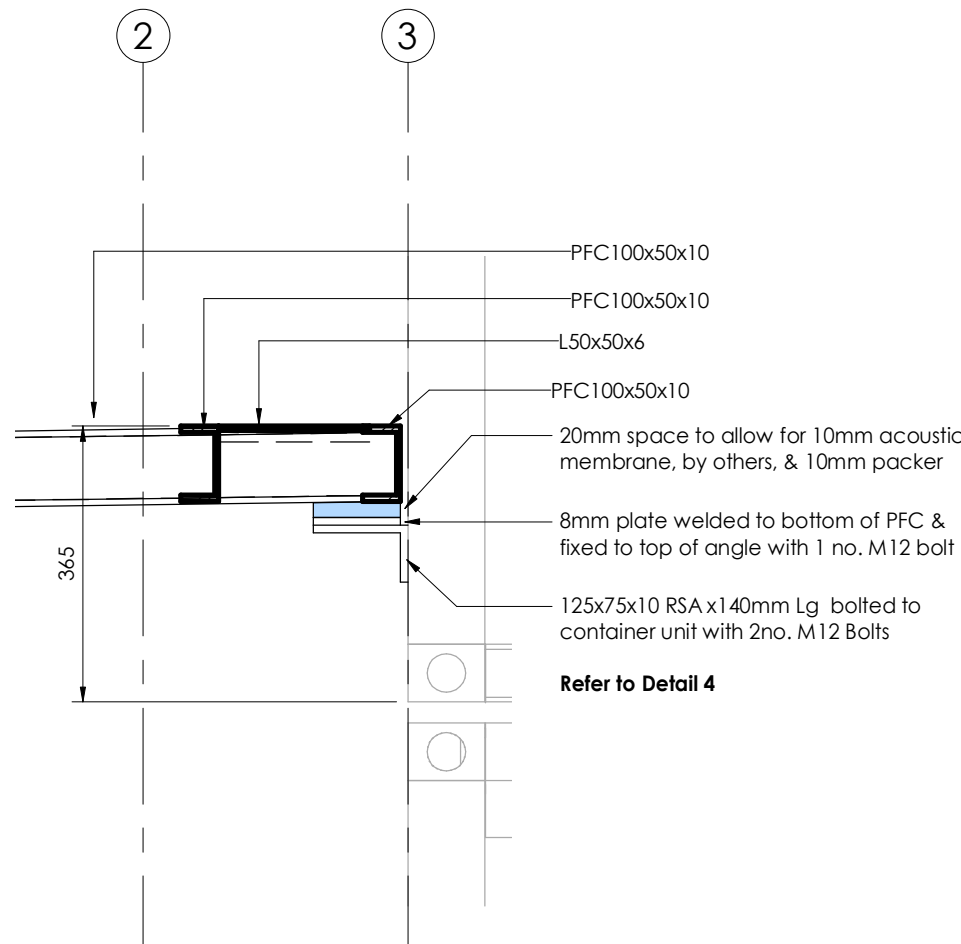
1 - Detail 1

Scale: 1 : 10



2 - Detail 2

Scale: 1 : 10



3 - Detail 3

Scale: 1 : 10

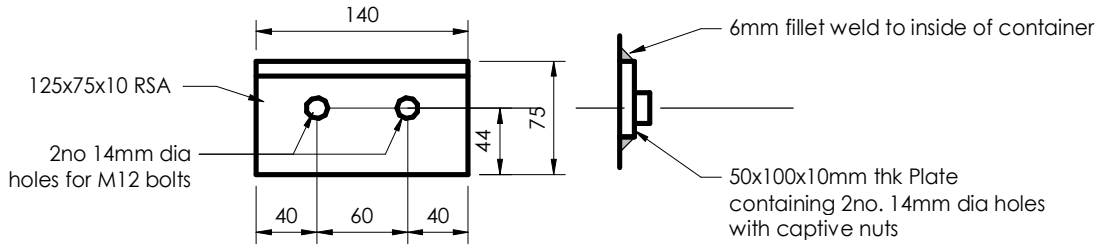


General Notes

- For setting out refer to Architect's drawings.
- This drawing to be read in conjunction with all other Architectural and Engineering drawings and all other relevant drawings and Specifications.
- DO NOT SCALE FROM THIS DRAWING. Use figured dimensions only.
- Refer to Drawing 17060/100 for all Project Specific Notes.

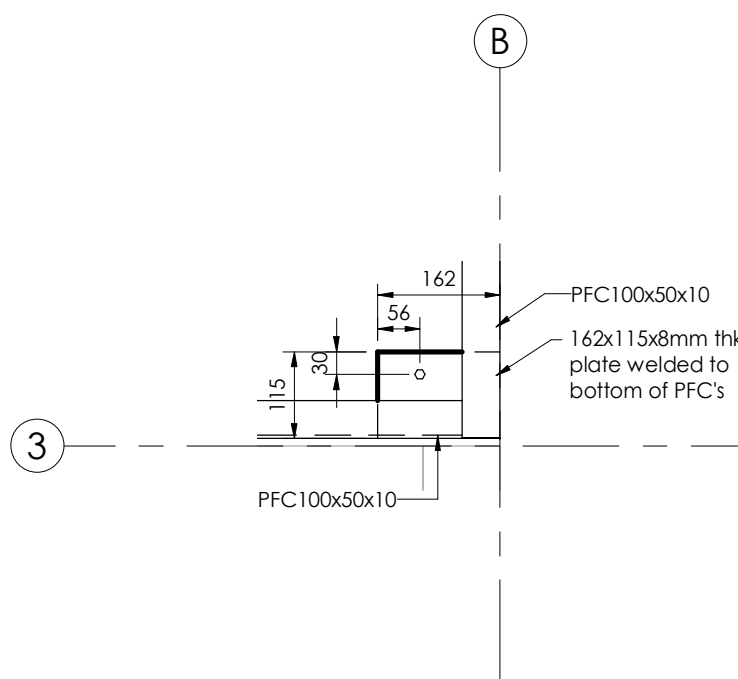
Notes:

- Handrails to be minimum 1115mm from FFL
- Bolt Holes for handrail to be submised by steel fabricator/added accordingly



4 - Detail 4

Scale: 1 : 5



5 - Detail 5

Scale: 1 : 10

Rev	Date	Issued By	Description
E	06.07.17	DM	General Revision
D	26.06.17	DM	General Revision
C	12.06.17	RH	General Revision
B	11.04.17	DM	General Revision
A	23.03.17	DM	First Issue

Design ID

Think | Design | Engineer

Project: QED Walkway Concept Development

Drawing Title: Walkway Plans & Section

Drawing Status: PRELIMINARY

Drawn By: CL

Date Drawn: March'17

Drawing Number: 17060 -103

Revision: E

Structural & Civil Engineers

23-25 Eastcastle Street
London
W1W 8DF

+44 (0)20 7250 0817
mail@designid.co.uk
www.designid.co.uk